

High Rejection

Anti-Fouling Reverse Osmosis (RO) Element

LG BW 400 AFR – Neutrally Charged Surface



Overview

LG NanoH₂O's anti-fouling brackish water RO membranes feature proprietary chemistry that inhibits the adsorption of biological and organic materials. Unlike competitor RO membranes, LG NanoH₂O's unique anti-fouling formulation maintains membrane stability and performance under industry standard cleaning methods, without compromising the highly hydrophilic nature of the membrane's surface.

- Best-in-class flux
- Excellent fouling resistance
- Well suited for low quality feed water across varying operating conditions

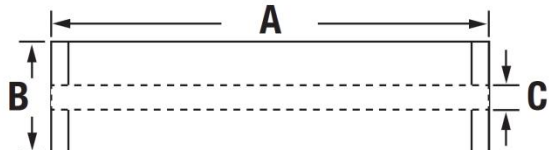


Product Specifications

Configuration: 8-inch spiral wound
 Membrane Polymer: Thin-film nanocomposite (TFN) polyamide

Product Number	Permeate flow rate m ³ /d (gpd)	Minimum NaCl Rejection %	Stabilized NaCl Rejection %	Active Membrane Area m ² (ft ²)	Feed Spacer mil
LG BW 400 AFR	39.7 (10,500)	99.5	99.6	37 (400)	34

Note: The above values are normalized to the following conditions: 2,000 ppm NaCl, 15.5 bar (225 psi), 25°C (77°F), pH 8, 15% recovery. Permeate flows for individual elements may vary +/- 15%.



Part Number	Length A	Element O.D. B	Perm Tube I.D. C	Weight kg (lbs.)
LG BW 400 AFR	1016 mm (40 in.)	200 mm (7.9 in.)	28.6 mm (1.125 in.)	16.4 (36)

Operating Specifications

For more information and operating guidelines, visit www.lg-nanoh2o.com

Max. Operating Pressure:	41 bar (600 psig)
Max. Chlorine Concentration:	< 0.1 ppm
Max. Operating Temperature:	45°C (113°F)
pH Range, Continuous (Cleaning):	2-11 (2-12)
Max. Feedwater Turbidity:	1.0 NTU
Max. Feedwater SDI (15 mins):	5.0
Max. Feed Flow:	19 m ³ /h (85 GPM)
Max. Pressure Drop:	1.0 bar (15 psig)

The information and data contained herein are deemed to be accurate and reliable and are offered in good faith, but without guarantee of performance. LG NanoH₂O assumes no liability for results obtained or damages incurred through the application of the information contained herein. Customer is responsible for determining whether the products and information presented herein are appropriate for the customer's use and for ensuring that customer's workplace and disposal practices are in compliance with applicable laws and other governmental enactments. Specifications subject to change without notice. LG NanoH₂O is a wholly owned company of LG Chem, Ltd. All rights reserved. © 2015 LG NanoH₂O, Inc.



LG NanoH₂O, Inc. • 750 Lairport Street, El Segundo, CA 90245 USA
 Tel: +1 424.218.4000 • Fax: +1 424.218.4001 • www.lg-nanoh2o.com

Rev. A (07.15)